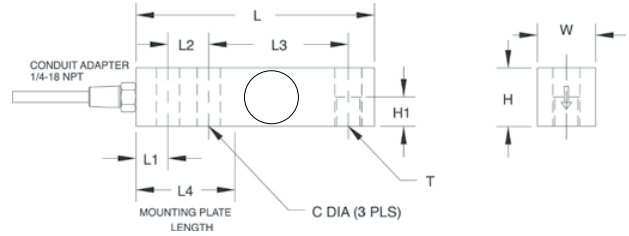


**RL35082** Single-Ended Beam, Stainless Steel, NTEP 1:5000 Class III Multiple Cell, Welded-seal, IP67, 66/68\*\*



Picture is a representation of actual product

**SPECIFICATIONS**

<b>Full Scale Output:</b> 2.0 mV/V	<b>Safe Overload:</b> 150% Full scale	<b>Deflection at Capacity:</b> 1000 lb=.013 in/.33 mm, 2500 lb=.015 in/.38 mm, 4000-5000 lb=.025 in/.64 mm, 10,000 lb=.032 in/.81 mm	<b>Conduit Adapter Size:</b> 1/4-18 NPT**
<b>Output Resistance:</b> 349-355 ohms	<b>Safe Sideload:</b> 100% Full scale	<b>Seal Type:</b> Welded-seal strain gauge*, IP67	<b>Cable Color Code:</b> Red ..... + Excitation Black ..... - Excitation Green ..... + Signal White ..... - Signal
<b>Input Resistance:</b> 343-357 ohms	<b>Rated Excitation:</b> 10V DC (15V maximum)	<b>Cable Length:</b> 20 ft/6.1 m	<b>Warranty:</b> Two-year limited warranty
<b>Material/Finish:</b> Stainless steel	<b>Combined Error:</b> 0.02% Full scale	<b>Cable Diameter:</b> .220 PTFE coated cable	<b>Approvals:</b> 
<b>Temperature:</b> Compensated range 14°F to 104°F/-10°C to 40°C	<b>Non-Repeatability:</b> 0.01% Full scale		
	<b>Insulation Resistance:</b> 5000 megohms		

**DIMENSIONS**

RATED CAPACITY	C	H	H1	L	L1	L2	L3	L4	T	W
<b>lb/inches</b>										
1000-4000	.53	1.22	.61	5.12	.62	1.00	3.00	2.25	1/2-20 UNF-2B	1.22
5000-10,000	.78	1.50	.75	6.75	.75	1.50	3.75	3.00	3/4-16 UNF-2B	1.50
<b>kg/mm</b>										
453.6-1814.4	13.5	31.0	15.5	130.0	15.7	25.4	76.2	57.2	1/2-20 UNF-2B	31.0
2268.0-4535.9	19.8	38.1	19.1	171.5	19.1	38.1	95.3	76.2	3/4-16 UNF-2B	38.1

**ORDER INFORMATION**

LOAD RATING	PART #	PRICE
<b>IP67 RL35082 N5 Model</b>		
1000 lb (453.6 kg)	31283	Consult
2500 lb (1134.0 kg)	31282	Consult
4000 lb (1814.4 kg)	31281	Consult
5000 lb (2268.0 kg)	31280	Consult
10,000 lb (4535.9 kg)	31279	Consult
<b>IP66/68** RL35082 HE Model</b>		
1000 lb (453.6 kg)	34702	Consult
2500 lb (1134.0 kg)	34703	Consult
4000 lb (1814.4 kg)	34704	Consult
5000 lb (2268.0 kg)	34705	Consult
10,000 lb (4535.9 kg)	34706	Consult

\*Conduit is recommended for maximum protection against the ingress of water and moisture through the cable entry

\*\*IP66/68 Hermetically sealed versions have 1/2-14 NPT conduit adapter

**INTERCHANGEABLE PRODUCTS**

MANUFACTURER	MODEL	PAGE #
VPG Sensortronics	65083 S	307

**WEIGH MODULE AVAILABLE**

MANUFACTURER	MODEL	PAGE #
Rice Lake Weighing Systems	RL50210	136
Rice Lake Weighing Systems	RL1800 Series	56